

## Lightsource Test Report

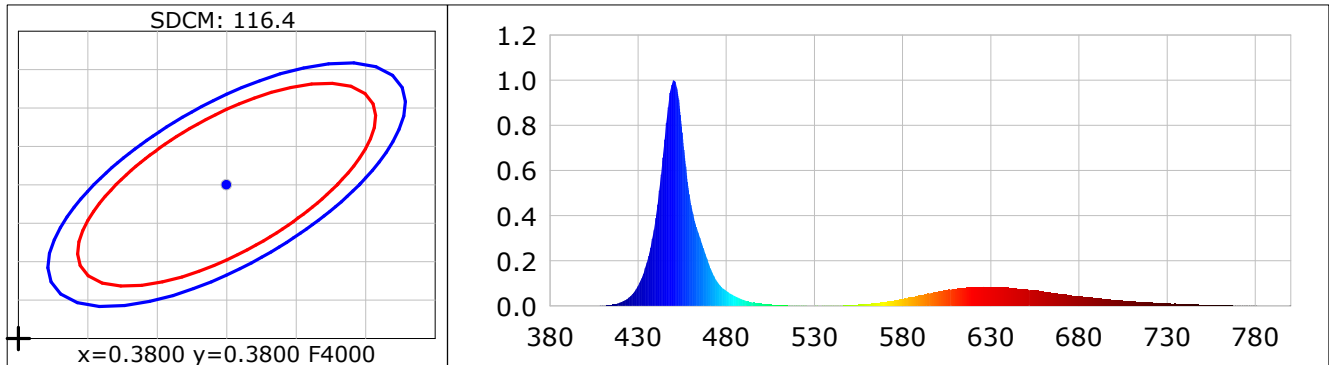
**Product Infomation**

Product Category: LED STRIP  
 Product Spec: ARCO 15  
 Manufacturer: TECSOLELED S.L.

Product Type: LED STRIP  
 Product Number: 323  
 Buyer: TECSOLELED S.L.

**CIE Colorimetric Parameters**

Chromaticity coordinates:  $x=0.2174$   $y=0.0722$   $u(u')=0.2535$   $v=0.1262$   $v'=0.1893$   
 CCT:  $T_c=100000K$  ( $duv=-0.15762$ ) Color Ratio:  $R=0.387$   $G=0.320$   $B=0.293$   
 Peak Wavelength: 450.3nm Half Bandwidth: 17.1nm  
 Dominant Wavelength: 380.0nm Color Purity: 0.783  
 CRI:  $R_a=-89.8$ ,  $avgR(1\sim14)=-143.9$ ,  $avgR(1\sim15)=-143.2$  TM30:  $R_f=0$ ,  $R_g=199$   
 GAI:  $GAI\_BB\_8=51.3$ ,  $GAI\_BB\_15=54.3$ ,  $GAI\_EES=55.9$   
 R1 =-76 R2 =-155 R3 =-210 R4 =-25 R5 =-49 R6 =-152 R7 =-59 R8 =6  
 R9 =-356 R10=-477 R11=-37 R12=-252 R13=-131 R14=-42 R15=-134  
 Color Quality Scale:  $Q_a=-1.\$$ ,  $Q_f=-1.\$$ ,  $Q_p=-1.\$$ ,  $Q_g=-1.\$$   
 Q1 =6 Q2 =0 Q3 =0 Q4 =0 Q5 =0 Q6 =33 Q7 =34 Q8 =0  
 Q9 =0 Q10=0 Q11=0 Q12=0 Q13=0 Q14=0 Q15=39



**Photometric Parameters**

Luminous Flux: 444.14 lm Efficiency: 33.07 lm/W Radiant Power: 5.448 W  
 Total mains efficacy: 30.62 lm/W Energy Efficiency Class: G (EU 2019/2015)

**Electric Parameters**

Voltage: 24.000V Current: 0.5597A Power: 13.43W  
 Power Factor: 1.0000 Frequency: 0.00Hz

**Test Infomation**

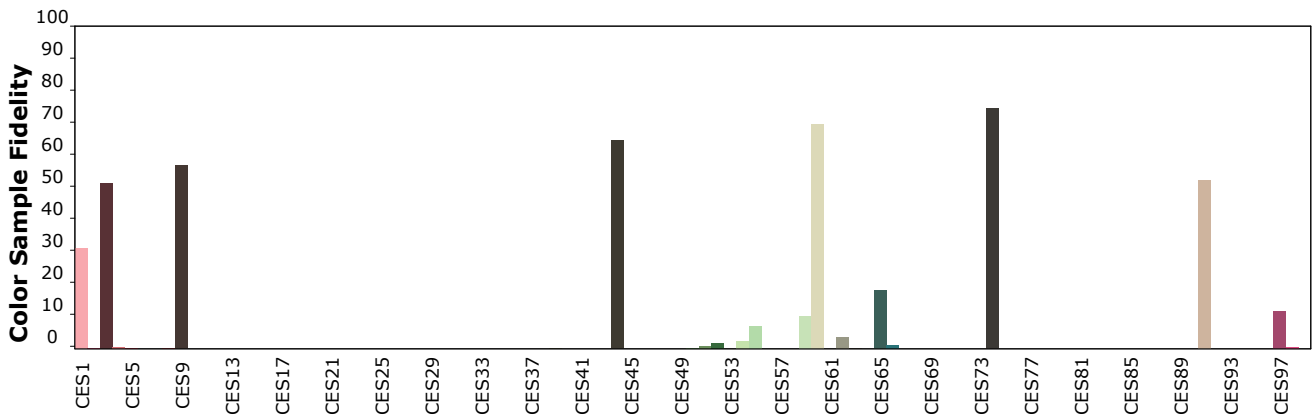
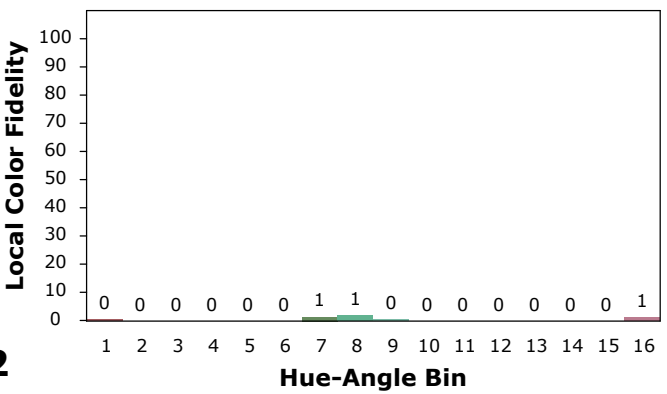
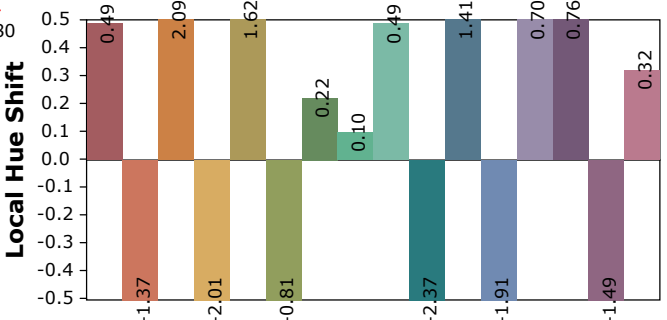
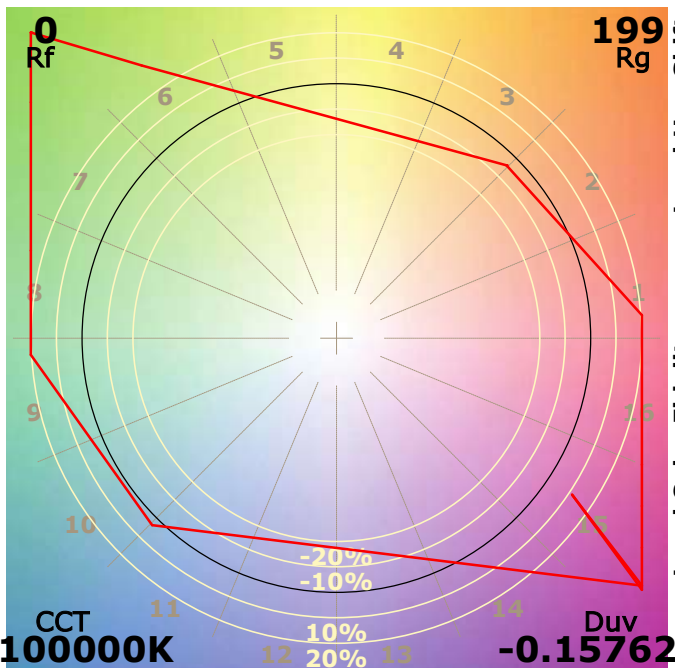
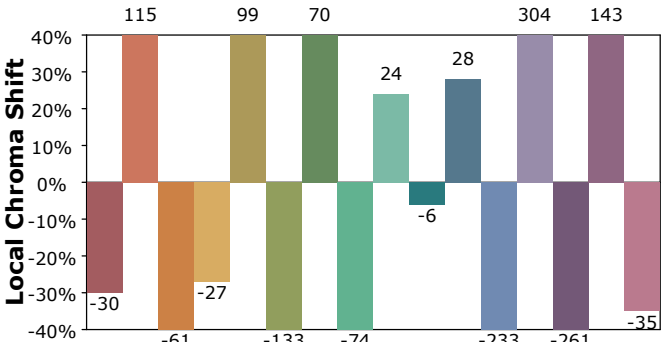
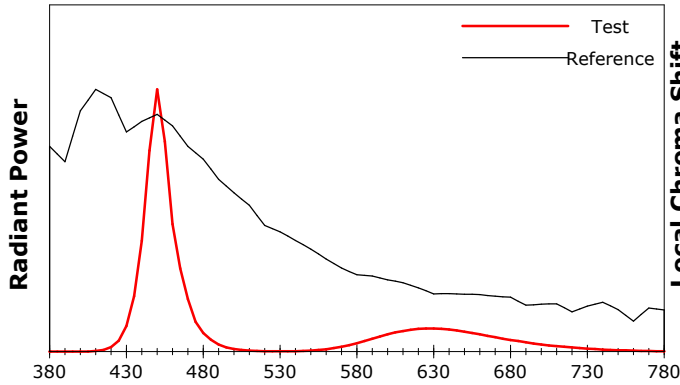
Scan Range: 380~800:1nm Photometric Method: sphere-spectroradiometer  
 Stabilization Time: 0 Sec ALC.: 1.0000 Photometric Condition: Sphere diameter: 1.50m, 4PI  
 Max of Signal: 53901 (2098) CCD Integration Time: 74.02 ms

## IES TM-30-18 Color Rendition Report

**Product Information**

Product Category: LED STRIP  
 Product Spec: 21059602440612  
 Manufacturer: TECSOLED S.L.

Product Type: LED STRIP  
 Product Number: 323  
 Buyer: TECSOLED S.L.



Condition: Tx:20.8'C, Ti:19.0'C, R.H.:60%  
 Test Lab: TECSOLED S.L.  
 Operator: JORDAN GIL DIAZ

Test Device: Inventfine CMS-2S (Plus)  
 Test Time: 2021-11-02 11:27:20  
 Inspector: